

Contract Manufacturing Measurement Technology



CONTRACT MANUFACTURING
AT THE HIGHEST LEVEL.

Welcome to Baltic Coast Technologies

With the extensive experience of a speciality mechanical engineering company, we have restructured ourselves as Baltic Coast Technologies GmbH & Co.KG. Ever since the foundation of our speciality mechanical engineering business, we have relied on innovative technologies and customized solutions to further increase efficiency and quality in the industry.

Our comprehensive services and commitment to continuous improvement make us a trusted partner in the industry. Trust Baltic Coast Technologies GmbH & Co.KG – your partner for the highest precision and reliability.



Our Offer

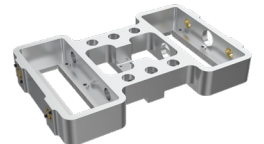
Special Machine Construction

We design and manufacture customized machines and systems precisely tailored to your requirements.



Contract Manufacturing

We manufacture your components and assemblies using state-of-the-art milling, turning, eroding, and grinding machines to enable precise production of your workpieces.



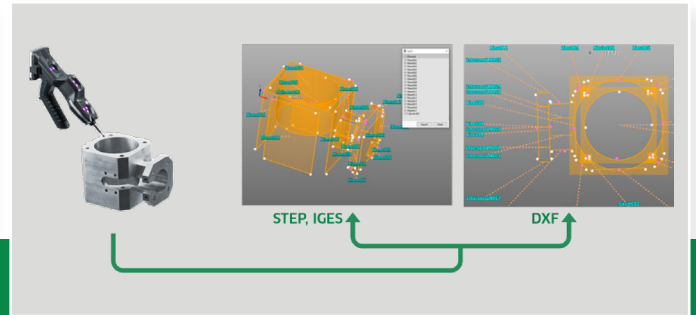
Measurement Technology

We use state-of-the-art measuring equipment to precisely measure your components and assemblies, ensuring the highest quality.



Measuring devices

Keyence WM-3500	
Max. Measuring length	15000x6000x7500
Measuring accuracy	$\pm(28+a5 L/1000)\mu\text{m}$
Repeatability	$\pm 10\mu\text{m}$



Your benefits

- **Quality standards:** Our quality control procedures ensure that assemblies meet exact specifications.
- **Cost savings:** Lower rejection rates result in reduced rework, thereby saving time and money.
- **Improved efficiency:** The swift completion of measurements allows for the streamlining of production processes.
- **Competitive advantage:** Products that meet the highest standards enhance your brand image and increase your competitive advantage.

3D CAD Export

The WM-3500 enables the output of measured shapes of measured objects as 3D CAD data, as well as comparison. This ensures that we not only provide you with accurate measurements, but also valuable data that you can utilise in your design and manufacturing processes.

Assembly measurement

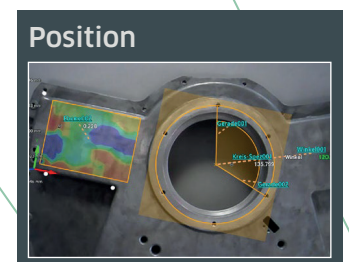
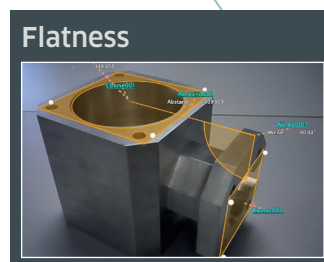
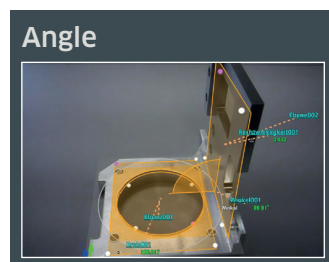
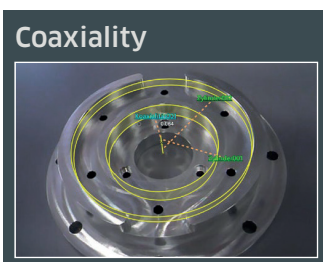
It is of the utmost importance to ensure precise measurement of large assemblies in order to guarantee quality and efficiency. Our services include precise measurements to guarantee that your products meet the highest quality standards.

3D CAD comparison after welding/assembly

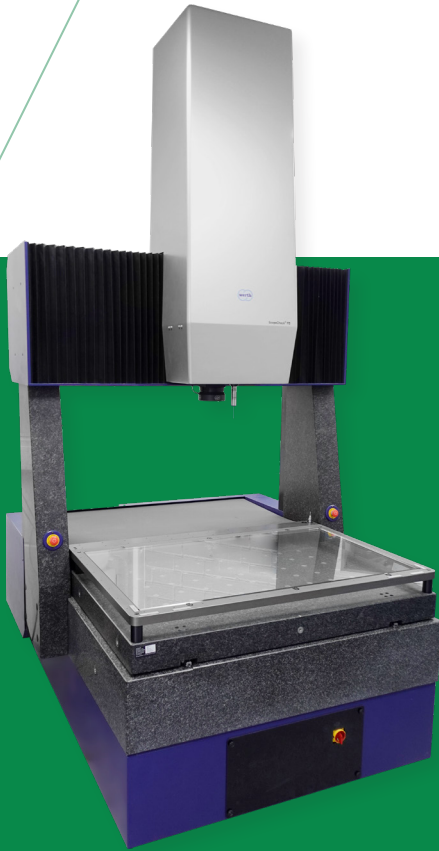
Once the sheets have been welded or assembled, the actual positions can be compared with the nominal positions from the 3D CAD data, allowing any discrepancies to be identified.

Easy-to-understand inspection reports

The inspection reports document the quality of the production parts and facilitate communication between all parties involved. Our customers benefit from clear and comprehensible presentation of measurement results in the inspection reports they receive from us. This allows for the efficient analysis of errors and contributes to the improvement of quality.



Measuring devices



Werth Scope Check FB DZ	
Maximum measuring range	930x650x600
Permissible length measurement deviation	1,5 µm

Your benefits

- **Precision:** Thanks to the latest multisensor technology with the ScopeCheck FB DZ, we guarantee precise measurement results.
- **Flexibility:** Our devices offer flexible measuring ranges that can also measure large workpieces without difficulty.
- **Fewer measurement errors:** Precise measurements help to identify and rectify errors at an early stage, which increases the quality of your products.
- **Comprehensive documentation:** Creation of detailed reports for quality monitoring.
- **Automation and repeatability:** Automatic sensor change and measurement programs enable efficient measurements.

Precise measurement of workpieces

The ScopeCheck FB is ideal for measuring complex parts. With a measuring range of 930 x 650 x 600 mm, both small and large parts can be measured precisely. This is particularly advantageous for customers who rely on the excellent quality of their products.

Complex geometries

Even complex geometries and hard-to-reach areas can be measured accurately. The device can perform both tactile and optical measurements, allowing comprehensive analysis of the workpieces. Customers can be sure that even the most challenging parts are being checked correctly.

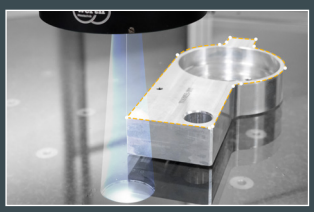
Efficient series measurements

The ScopeCheck FB enables efficient series measurements. Automation and high measurement dynamics make it possible to quickly measure several workpieces. This optimises production processes and shortens throughput times.

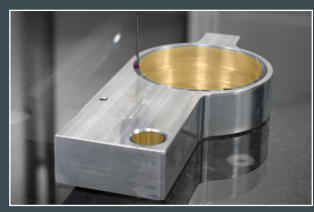
Quality assurance and process optimisation

The ScopeCheck FB is an important tool for quality assurance and process optimisation. By accurately measuring the workpieces, faults can be detected and rectified at an early stage. This improves product quality and saves costs. Customers benefit from a reliable and precise measurement solution for their production processes.

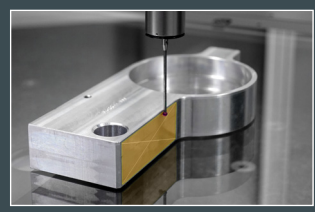
Contours



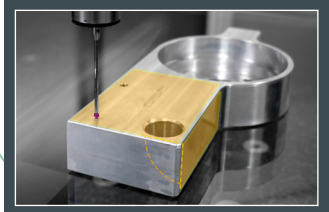
Roundness



Flatness



Positional tolerance



Rely on Precision - Rely on Us!

As a mechanical engineering company specializing in customized machine construction, we understand how crucial precise manufacturing is for the success of your projects. With our state-of-the-art measuring instruments, we guarantee the highest accuracy and reliability.

Convince yourself of our expertise and let us make your projects a success together.

Contact us now!



Baltic Coast Technologies GmbH & Co.KG

Frankfurter Str. 4
D-23689 Pansdorf, Germany

Tel.: +49 (0) 45 04 / 601 0
Fax: +49 (0) 45 04 / 601 133

lohnfertigung@bct-sh.de
www.bct-sh.de

