



Contract Manufacturing

Machine Park



CONTRACT MANUFACTURING
AT THE HIGHEST LEVEL.

Welcome to Baltic Coast Technologies

With the extensive experience of a speciality mechanical engineering company, we have restructured ourselves as Baltic Coast Technologies GmbH & Co.KG. Ever since the foundation of our speciality mechanical engineering business, we have relied on innovative technologies and customized solutions to further increase efficiency and quality in the industry.

Our comprehensive services and commitment to continuous improvement make us a trusted partner in the industry. Trust Baltic Coast Technologies GmbH & Co.KG – your partner for the highest precision and reliability.



Our Offer

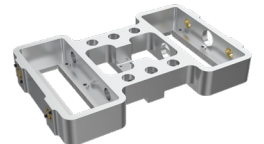
Special Machine Construction

We design and manufacture customized machines and systems precisely tailored to your requirements.



Contract Manufacturing

We manufacture your components and assemblies using state-of-the-art milling, turning, eroding, and grinding machines to enable precise production of your workpieces.



Measurement Technology

We use state-of-the-art measuring equipment to precisely measure your components and assemblies, ensuring the highest quality.



Milling Machines

Hurco VMX60SRTi

Table size	1680x660
Faceplate	600
Travel paths	X-axis - 1524 Y-axis - 660 Z-axis - 610 B-axis - +/- 90° C-axis - 360°



Hurco VMX42SRTi

Table size	1000x660
Faceplate	600
Travel paths	X-axis - 1200 Y-axis - 660 Z-axis - 600 B-axis - +/- 90° C-axis - 360°



Hurco VM10i

Table size	762x406
Travel paths	X-axis - 660 Y-axis - 400 Z-axis - 500



OPS 650 HSC Processing

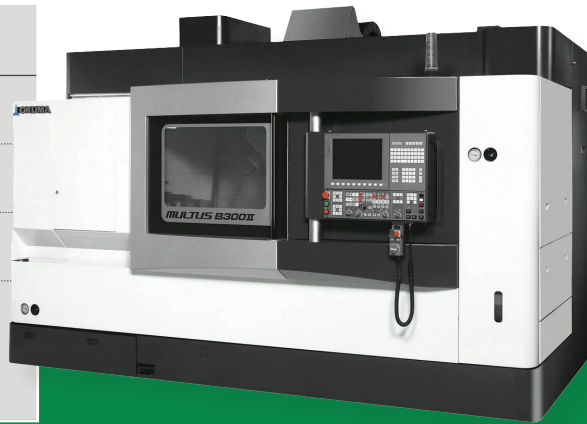
Table size	400x400 / 600x400
Travel paths	X-axis - 700 Y-axis - 550 Z-axis - 450 A-axis - +/- 120° B-axis - 360°



Turning Machines

Okuma Multus B300II

Spindle bore	70
Turning diameter	630
Three-jaw chuck	315
Travel paths	X-axis: 580 Y-axis: 160 Z-axis: 935



Okuma LB4000 EX II MY

Spindle bore	80
Turning diameter	430
Three-jaw chuck	315
Four-jaw chuck	160
Travel paths	Y-axis: 140 Z-axis: 1500



Okuma LB3000 EX

Spindle bore	70
Turning diameter	420
Three-jaw chuck	250
Four-jaw chuck	160
Travel paths	Y-axis: 120 Z-axis: 1250



Voest Alpine (NC)

Spindle bore	63
Turning diameter	340
Three-jaw chuck	250
Travel paths	Z-axis: 1000



Eroding Machines

Agie Charmilles Robofil 440 SLP

Working area	1200x720
Max. taper angle	+/- 30°
Travel paths	X-axis: 550 Y axis: 350 Z-axis: 400 U-axis: 550 V-axis: 350



Mitsubishi MV2400R

Working area	840x640
Max. taper angle	+/- 30°
Travel paths	X-axis: 600 Y axis: 400 Z-axis: 310 U-axis: 75 V-axis: 75



Mitsubishi Start 43c

Working area	920x680x350
Travel paths	X-axis: 450 Y-axis: 300 Z-axis: 350



Mitsubishi EA8

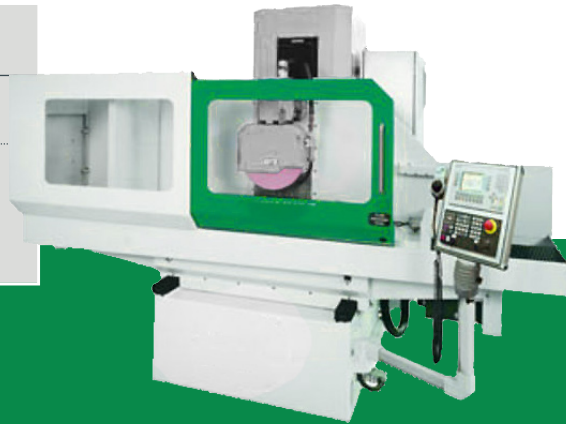
Working area	500x350
Travel paths	X-axis: 300 Y-axis: 250 Z-axis: 250 C-axis: 360°



Grinding Machines

Starline 600 E

Magnetic plate	800x400
Travel paths	X-axis: 800 Y axis: 400 Z-axis: 400



Wolters AC800 S

Max. diameter	220
Max. height	100



Wolters AC700 HAT

Max. diameter	200
Max. height	75



Schautt T 3I

Max. grinding length	Internal: 200 External: 400
Working diameter	Internal: 200 External: 150



Grinding Machines

Kellenberger UR 175/1500

Max. center height	175
Max. center distance	1500
Max. grinding length	1650



Honing Machine Sunnen SV35

Diameter	20-150
----------	--------



Profile Grinding Machines

aba powerLine 1207

Magnetic plate	800x500
Max. grinding length x	1200
Max. grinding width z	700
Max. travel path y	900



aba PSM 1500

Magnetic plate	600x400
Max. grinding length x	2200
Max. grinding width z	400
Max. travel path y	580



ELB smartLine BD10

Max. grinding length x	1000
Max. grinding width z	600
Max. travel path y	530
Additional rotary and swivel axis	



aba powerLine 604

Max. grinding length x	800
Max. grinding width z	400
Max. travel path y	530
Additional rotary and swivel axis	

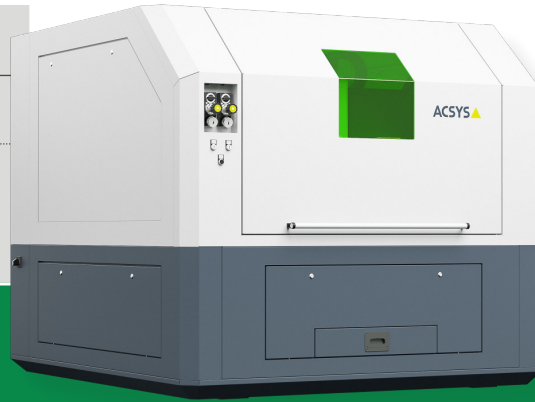


All dimensions without specified unit are shown in millimeters (mm).

Laser Cutting

ACSYS SHARK CUT FL450

Sheet thickness	0,01 - 2
Travel paths	X-axis - 1000 Y-axis - 1000 Z-axis - 80



Rely on Precision - Rely on Us!

As a mechanical engineering company specialized in customized machine construction, we understand how crucial precise manufacturing is for the success of your projects. With our state-of-the-art machine park, we guarantee the highest accuracy and reliability.

Convince yourself of our expertise and let us make your projects a success together.

Contact us now!



Baltic Coast Technologies GmbH & Co.KG

Frankfurter Str. 4
D-23689 Pansdorf, Germany

Tel.: +49 (0) 45 04 / 601 0
Fax: +49 (0) 45 04 / 601 133

lohnfertigung@bct-sh.de
www.bct-sh.de

1

Contact

2

Offer

3

Production

4

Delivery